

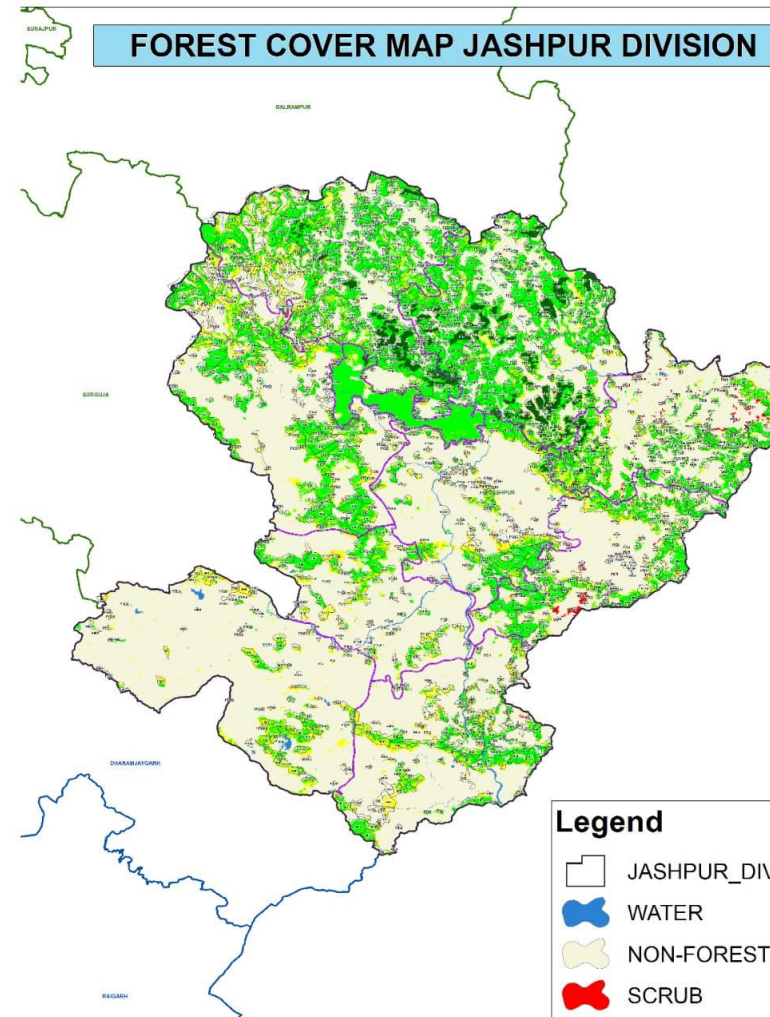
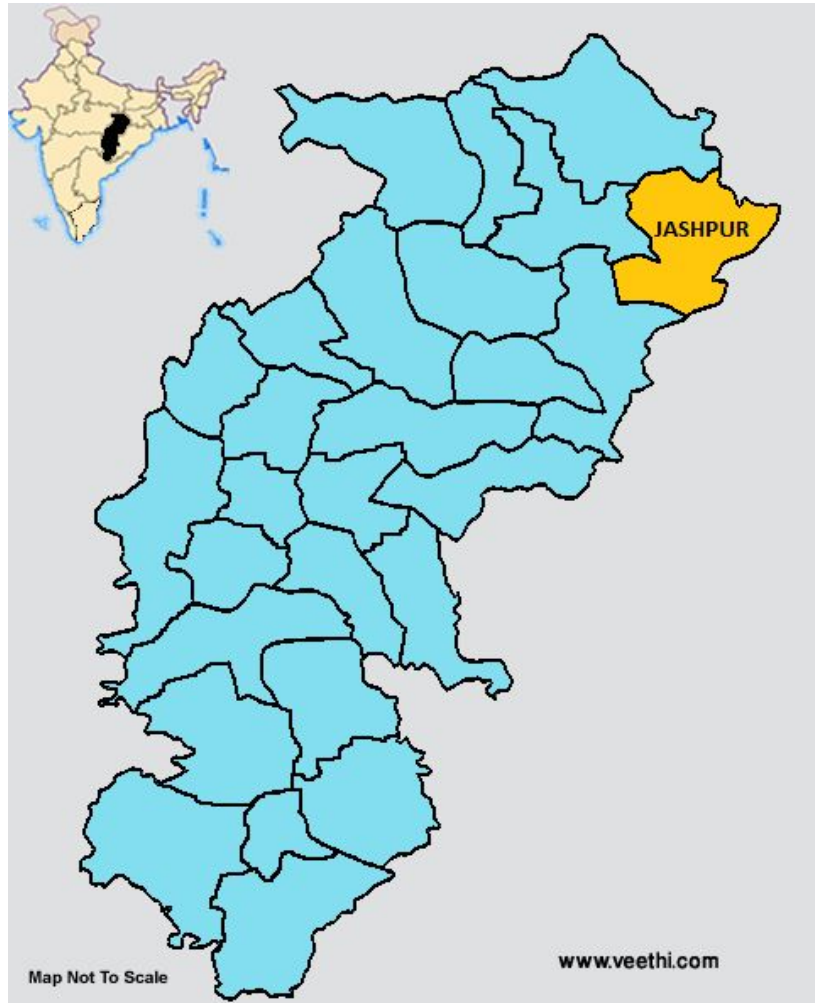
Value Added Products of NTFPs

Presented by-

Shrikrishna Jadhav, IFS (Chhattisgarh)

DFO Jashpur

Forests of Jashpur



NTFPs

- the produce from various forest species in the form of fruits, seeds, leaves, barks, roots, flowers and grasses etc., including entire plant of medicinal herbs/shrubs.
- *Aka* MFPs but these are no more minor
- CG/Jashpur- very rich in these NTFPs of commercial importance.

Commercially important species

S.No.	Species(Common Name)	Botanical Name	Parts Used
1	Sal	Shorea robusta	Seed
2	Harrah	Terminalia chabula	Friut
3	Imli	Tamarindus indicus	Friut Seed
4	Char	Buchnanian launzan	Seed
5	Mahua	Madhuca latifolia	Seed
6	Lac	Lac	Lac
7	Bahera	Terminalia belerica	Friut
8	Chironta	Casia tora	Seed
9	Honey	Honey	Honey
10	Nagarmotha	Cyperus rotandus	Rhizome
11	Hill Broom	Thysanolaena maxima	Flower
12	Mahua	Madhuca latifolia	Flower
13	Jamun	Syzygium cumini	Seed
14	Dhawai	Woodfordia fruticosa	Flower
15	Karanj	Pongamia pinnata	Seed
16	Giloya	Tinospora cordifolia	Stem
17	Kalmegh	Andrographis paniculata	Whole Plant

Covered under state msp scheme

Sr. No.	Species(Common Name)	Botanical Name	Parts Used
1	Mahul	Bauhinia vahlii	Leaf
2	Van talsa	Ocimum tenuiflorum	Seed
3	Palas	Butea monosperma	Flower
4	Satwar	Asparagus racemosus	Rhizome
5	Neem	Azadirachta indica	Seed

Institutional Mechanism for NTFP Trade and Development in CG

- Three tier cooperative organization-
 1. CG State Minor Forest Produce Cooperative Federation, Raipur- headed by a PCCF rank officer on deputation
 2. District Unions- DFO as *ex-officio* MD
 3. Primary Cooperative Societies- Foresters/ Deputy Ranger as Secretaries

Success story: *Van Dhan Kendra, Panchakki, Jashpur*

Activities-

1. Mahua Sanitizer Production Unit
2. *Vanoushadhi Prasanskaran Kendra*
 - *Chyawanprash*
 - *Kounchpaak*
 - *Vasavleh*
3. *Dona Pattal kendra*
4. *Mahua Laddu Unit*



Sanitizer Production Unit

- Established in May 2020
- **Ingredients** - Ethanol(prepared using Mahua flower), Hydrogen Peroxide, Glycerol, IPA
- Production- +10000 lit
- Market Value- +50 lakhs rupees
- Net Profit- about 12 lakhs
- All Women SHG- 10 members
- Marketing- through Sanjeevani Retail Outlets of CG Herbals, Tribes India outlets of TRIFED
- <C:\Users\shrii\OneDrive\Desktop\Sanitizer.mp4>



Vanoushadhi Prasanskaran Kendra

1. Chyavanprash :

Ingredients -

Plants Botanical Name	Pistacia integerrima	Elettaria Cardamomum	Cinnamomnm zeylanicum
Aegle marmelos	Phyllanthus neurie	Santalum album	Musua ferrea
Premna mucoronata	Vitis Vinifera	Saussrea lappa	Sugar
Oxoxylum indicum	Ledtadenia reticutata	Pueraia tuberosa	
Gmelina arborea	Inula racemosa	Adhatoda Vasica	
Stereospermum	Aquilaria agallocha	Withania sominifera	
Sida cardifolia	Terminallia Chebula	Martynia diandra	
Desmodium gangticum	Tinospora	Phyllanthus embilica	
Uraia picata	Dioscorea bulbifera	Water	
Phaseolus trilobus	Pueraria tuberosa	Ghee	
Teramnus labialis	Pueraria tuberosa	Sesamum indicum	
piper longum	Hedychium Spicatiua	Honey	
Tribulus terrestris	Cykprus Rotundus	Cinnamomnm zeylanicum	
Solanum inducuk	Boerhavia Diffusa	Elettaria Cardamomum	
Solanum xanthocarpun	Listsa glutiona	Cinnamomnm zeylanicum	



- <C:\Users\shrii\OneDrive\Desktop\chyavanprash.mp4>

Kouchpak :

- **Ingredients** – Mucuna, Ghee, Piper longum, Sugar, Milk
- **Uses-** Aphrodisiac, Useful in Oligospermia & Vata improves stamina.



Vasavaleh :

- **Ingredients** - Adhatoda vasica, Misari, Ghee, Piper longum, Elettaria cardamomum, Sesamum indicum, Honey, Sugar, Mussua ferrea
- **Uses-** Cough, dyspnea, TB, Fever, Bleeding, disorder, Intercostal neuraigia



Vanoushadhi Prasanskaran Kendra

Herbal Product Name	Quantity Produced	
	Number (Qtl.)	Total Value
Chyawanprash	25.42	12.39
Vasavaleh	3.77	2.78
Kounchpak	1.69	1.94
Total :		17.11



***Mahua Laddu* Production Unit**

- **Ingredients** - Mahua flower(food grade), ghee, cashew/ chironji/ peanuts, sesame, rice flour
- **Process-**
 1. Collection of food grade Mahua flowers
 2. Drying of Mahua flowers
 3. Cleaning- removing stamens by beating
 4. Frying with ghee
 5. Crushing
 6. Mixing with other ingredients and making *laddoos*

Mahua Laddu Production Unit



Collection of food grade Mahua flowers



Drying of Mahua flowers



Cleaning- removing stamens by beating



Frying with ghee

***Mahua Laddu* Production Unit**



making *laddos*



Shot on OnePlus
By Apoorva

Dona-Pattal Production Unit

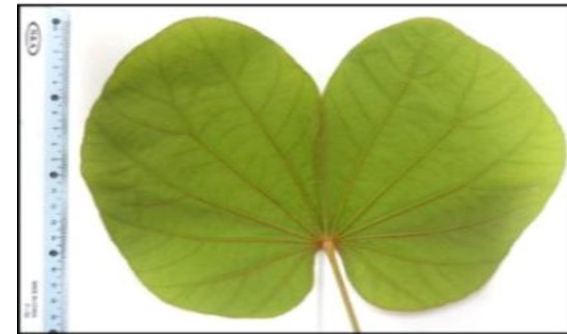
- Made from leaves of *Bauhinia vahlii* locally known as Mahul- perennial, fast growing climbing shrub, leaves are of camel's foot shape
- Process-
 1. Plucking, drying and storage of leaves
 2. Grading and stitching together.
 3. gluing to card sheets
 4. moulding into various required sizes



I



III



Dona-Pattal continued....



Coming up venture

- Herbal Soap Unit-

Constituents-

1. Karanj/ Sal Seed butter/ Mahua Seed Oil
2. NaOH
3. Essential Oil
4. Distilled water

Role of FD

- Identification of SHGs.
- Identification of master trainers.
- Training of members of SHGs- in value addition, use of equipment, enterprise management
- Providing premises for operations and necessary equipment
- Facilitating forward and backward linkages
- Arrangement of Logistics and Transportation
- Branding and Marketing- '*Chhattisgarh Herbals*' through '*Sanjeevani*'
- Handholding at any other stages as per requirement

Sanjeevani



Challenges

- Tribal way of living- subsistence living, high happiness index, low level of Motivation to excel
- Daily wages mentality vs Entrepreneurship mentality
- Group Dynamics
- Too much dependence on govt.

Opportunities

- Being forest dwellers they have very good traditional knowledge of NTFPs, medicinal plants and its uses.
- Once motivated for the work, they can work tirelessly
- Women empowerment
- Financial discipline
- Active participation in democratic institutions
- Increased employment opportunities in rural areas

What is there for Forests?

- Providing alternative livelihoods to forest dependent communities
- Being imbued with sustainable forest utilization
- Thus building goodwill, mutual trust which in turn helping to protect forest and wildlife (minimizing HEC in Jashpur)
- Thus strengthening JFM/ Public Participation

THANK YOU