

# ***Diospyros melonoxylon***

By

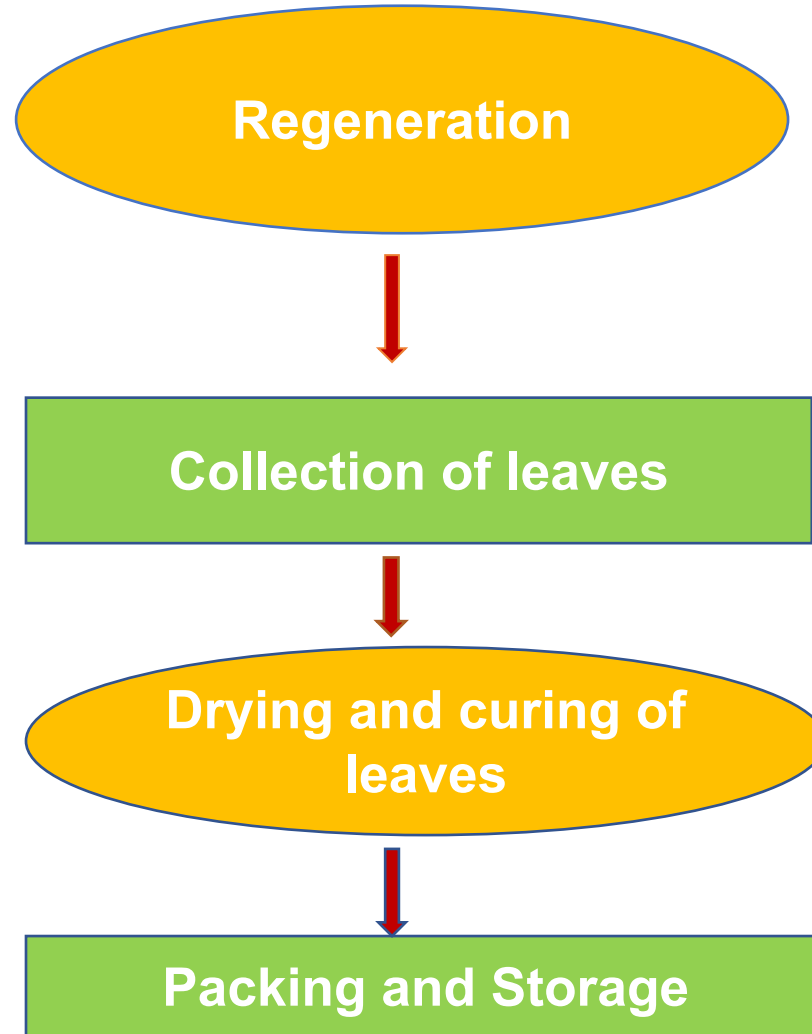
Shri. Gorakh Kalunge, IFS  
Associate Professor,  
IGNFA

# Introduction

## Distribution of tree :

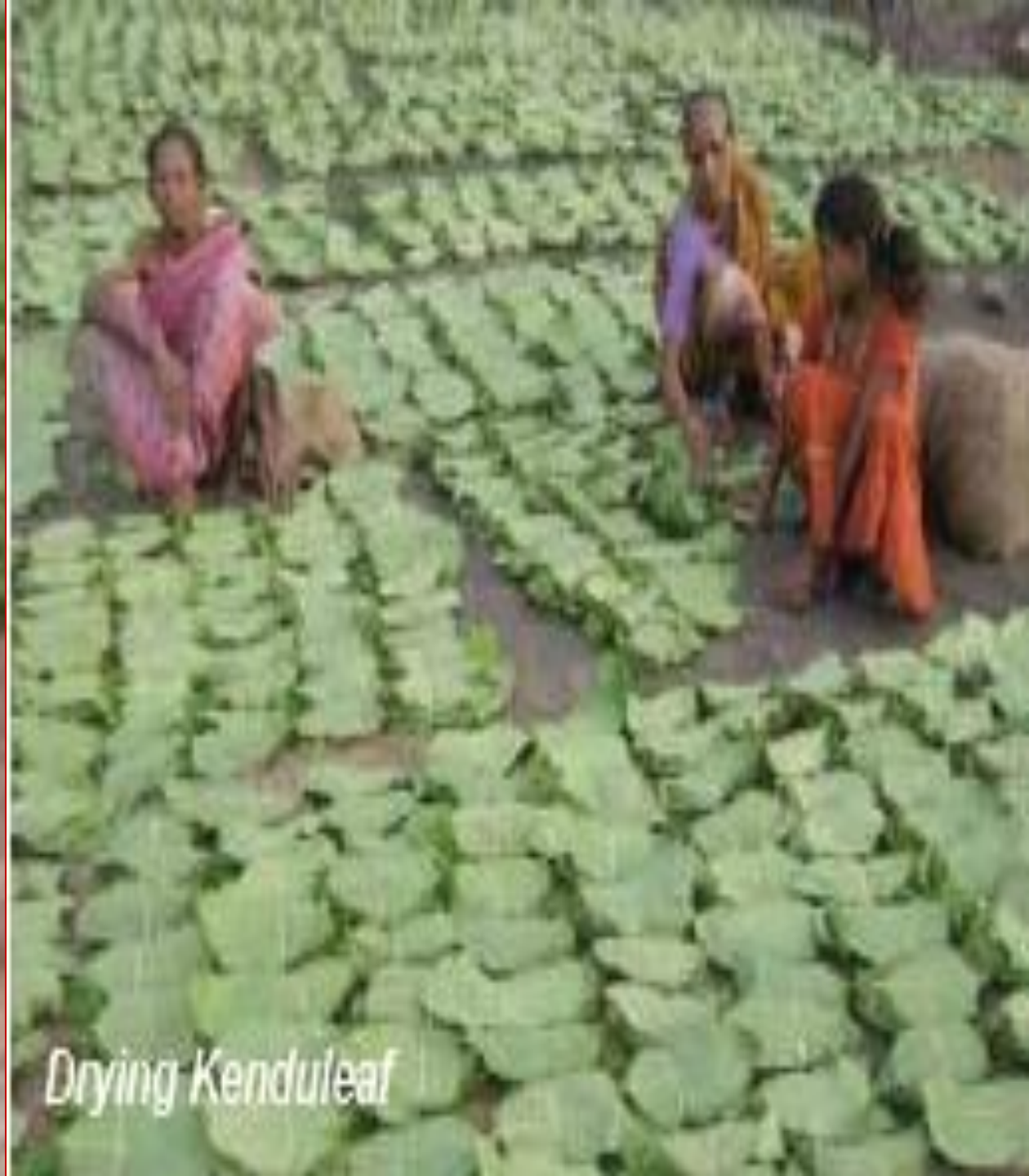
- Madhya Pradesh, Odisha, Maharashtra, Andhra Pradesh, Bihar, Rajasthan, Uttar Pradesh, Gujarat, Tamil Nadu, and West Bengal
- Dry mixed deciduous forests, occurring alongside *Shorea robusta* and *Tectona grandis*

# Management practices





*Local Tribes Engage in Kenduleaf Operation*



*Drying Kenduleaf*

# Marketing strategies in different states

Sr No	Name of State	Year of Nationalization
1	Madhya Pradesh	1964
2	Chhattisgarh	1964
3	Maharashtra	1969
4	Andhra Pradesh	1971
5	Odisha	1971
6	Bihar	1974

## **The primary objectives for nationalization were**

- Stopping pilferage in government forest and other lands**
- Provide definite value for Tendu leaves to collectors**
- Increase revenue to state**
- Provide adequate wages to labour**
- Improve quality and quantity of leaves by regular pruning**
- Ensure supply of leaves to small and medium manufacturers of *bidis***

# Tendu leaves in Odisha

Crop year	Quantity sold(lakh quintals)			Sale value (in lakhs)
	Processed	Phal	Total	
2010	3.588	0.843	4.431	36424.16
2011	2.978	0.832	3.81	41330.88
2012	3.395	0.868	4.263	42219.33
2013	3.581	0.908	4.489	41958.66
2014	3.268	0.684	3.952	39061.3

<b>Year</b>	<b>Collection(lakhs SB)</b>
<b>1989</b>	<b>43.61</b>
<b>1990</b>	<b>61.15</b>
<b>1991</b>	<b>46.16</b>
<b>1992</b>	<b>45.06</b>
<b>1993</b>	<b>41.31</b>
<b>1994</b>	<b>42.38</b>
<b>1995</b>	<b>39.56</b>
<b>1996</b>	<b>44.6</b>
<b>1997</b>	<b>40.14</b>
<b>1998</b>	<b>45.47</b>
<b>1999</b>	<b>49.37</b>
<b>2000</b>	<b>29.59</b>
<b>2001</b>	<b>21.28</b>
<b>2002</b>	<b>22.74</b>
<b>2003</b>	<b>22.25</b>
<b>2004</b>	<b>25.77</b>
<b>2005</b>	<b>16.83</b>
<b>2006</b>	<b>17.97</b>
<b>2007</b>	<b>24.21</b>
<b>2008</b>	<b>18.25</b>
<b>2009</b>	<b>20.49</b>
<b>2010</b>	<b>21.24</b>
<b>2011</b>	<b>17.06</b>
<b>2012</b>	<b>26.06</b>
<b>2013</b>	<b>19.92</b>
<b>2014</b>	<b>16.99</b>
<b>2015*</b>	<b>16.35</b>



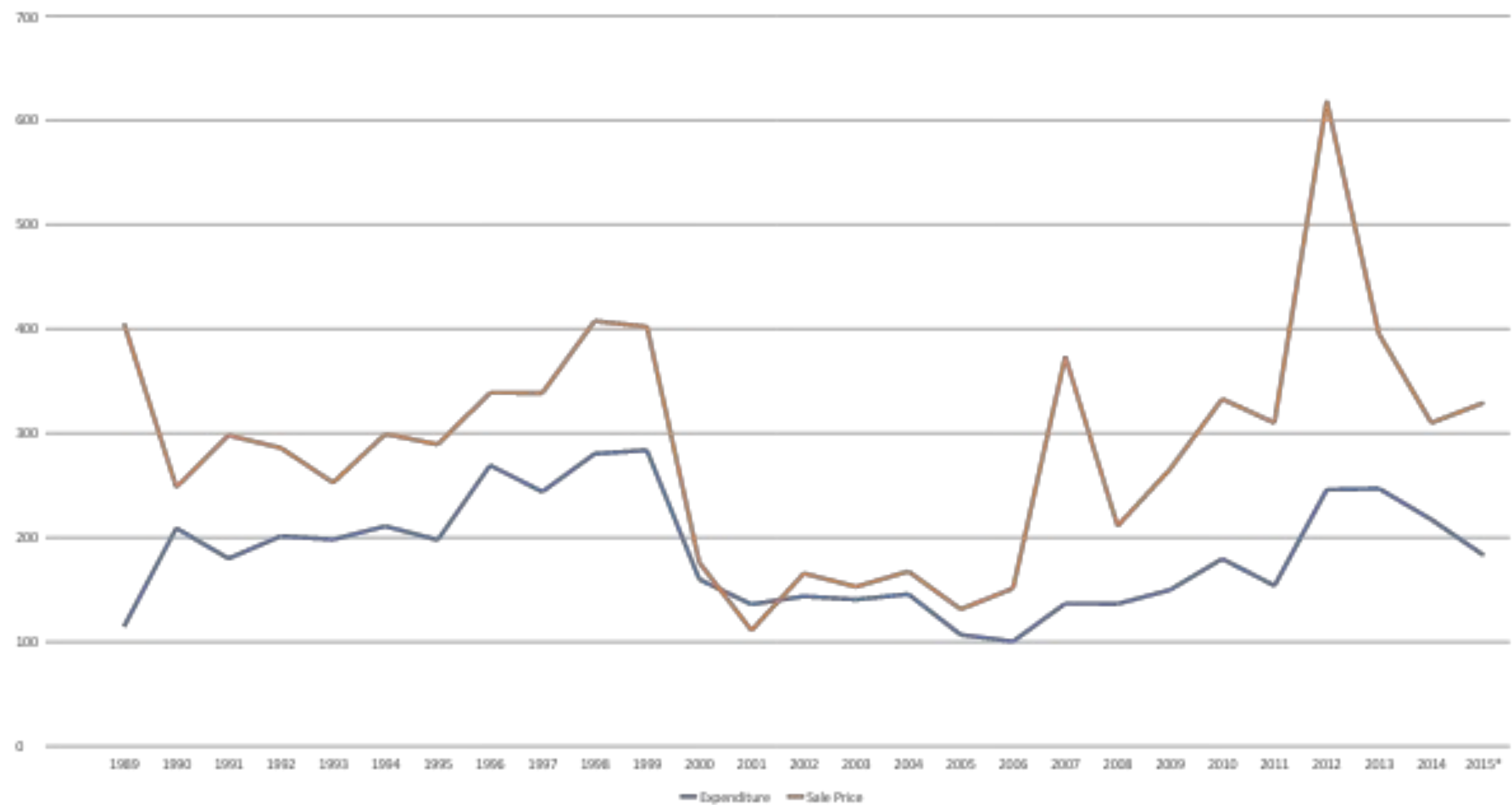
# Tendu leaves in Madhya Pradesh

Collection of Tendu leaves (Standard bag)



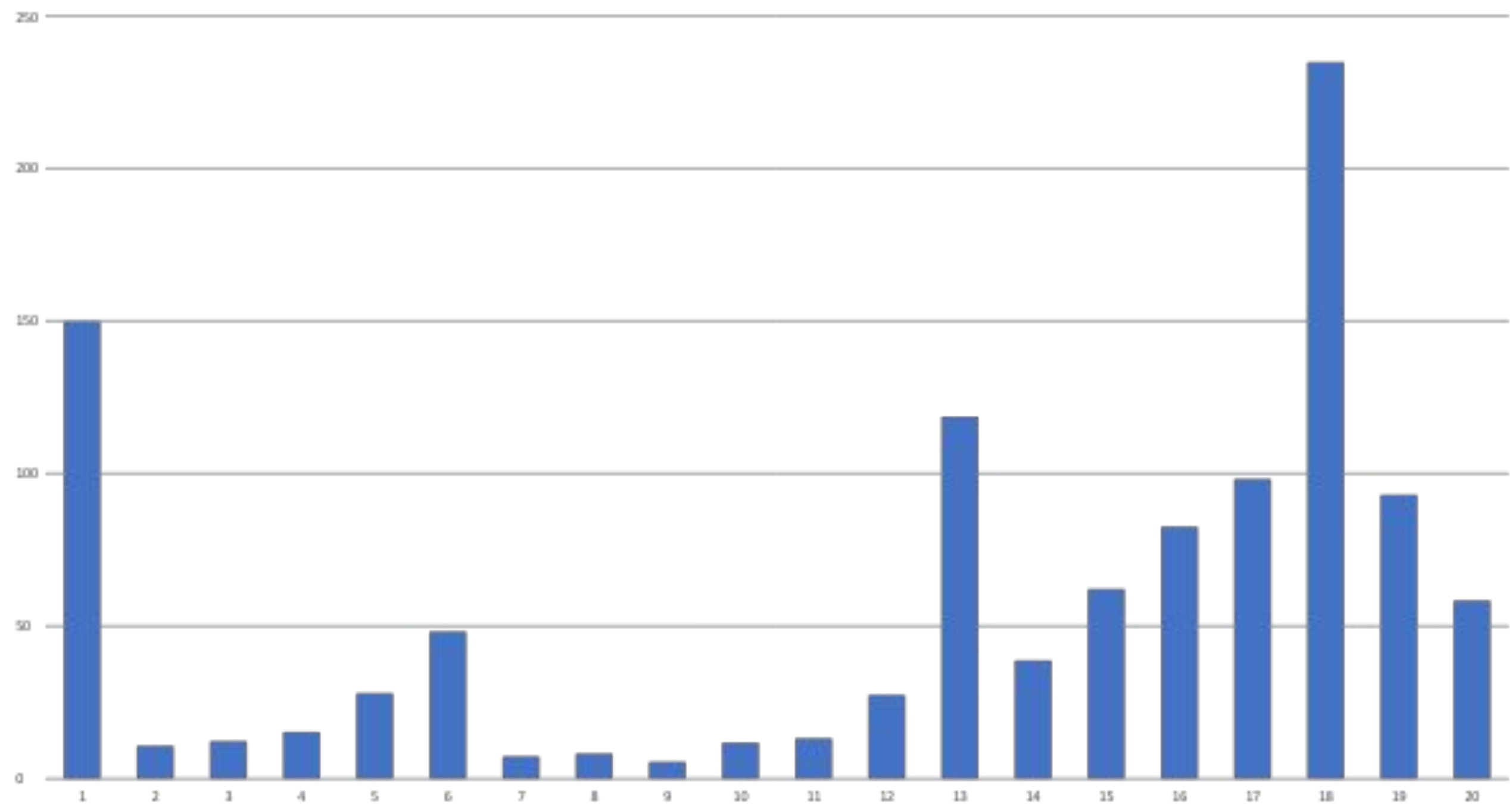
<b>Year</b>	<b>Expenditure(Cr)</b>	<b>Sale Price(Cr)</b>	<b>Net receipt</b>
1989	114.7	405.15	290.45
1990	209.12	248.47	39.35
1991	180	298.07	118.07
1992	201.47	285.99	84.52
1993	198.29	252.77	54.48
1994	210.95	299.4	88.45
1995	197.8	289.39	91.59
1996	269.38	338.85	69.47
1997	244.05	338.69	94.64
1998	280.39	407.66	127.27
1999	283.87	402.2	118.33
2000	160.08	176.31	16.23
2001	136.07	111.05	-
2002	143.83	165.77	21.94
2003	140.71	152.95	12.24
2004	145.86	167.71	21.85
2005	106.9	131.41	24.51
2006	100.56	151.33	50.77
2007	136.89	373.64	236.75
2008	136.57	211.26	74.69
2009	149.86	265.49	115.63
2010	179.71	332.89	153.18
2011	154.1	310.06	155.96
2012	245.94	618.4	372.56
2013	247.04	394.81	147.77
2014	217.39	310.09	92.7
2015*	183.19	329.27	-

## Sale Price Vs Expenditure



<b>Season</b>	<b>Leaf pluckers(in Lakhs)</b>	<b>wages paid (In Rs. crores)</b>
1989	21.31	150
1995	15.76	10.76
1996	18.02	12.29
1997	22.41	15.3
1998	18.84	27.99
1999	15.5	48.22
2000	4.5	7.3
2002	5.23	8.22
2003	4.64	5.51
2004	8.21	11.8
2005	9.8	13.23
2006	10.86	27.41
2007	12.39	118.58
2008	9.15	38.73
2009	10.83	62.1
2010	11.3	82.57
2011	9.03	98.22
2012	12.17	234.74
2013	-	93.1
2014	-	58.4

**Amount of Incentive wages paid (In Rs. crores)**



# Issues and challenges

- ❖ Tree pruning or cutting
- ❖ Burning of area intended for production
- ❖ Less budget for bush cutting
- ❖ Uncertain future
- ❖ Implementation of FRA

# Way forward.....

- I. Exploration of alternative uses of Tendu leaves
- II. Strengthening of research and development
- III. Implementation of welfare schemes

**THANK YOU**