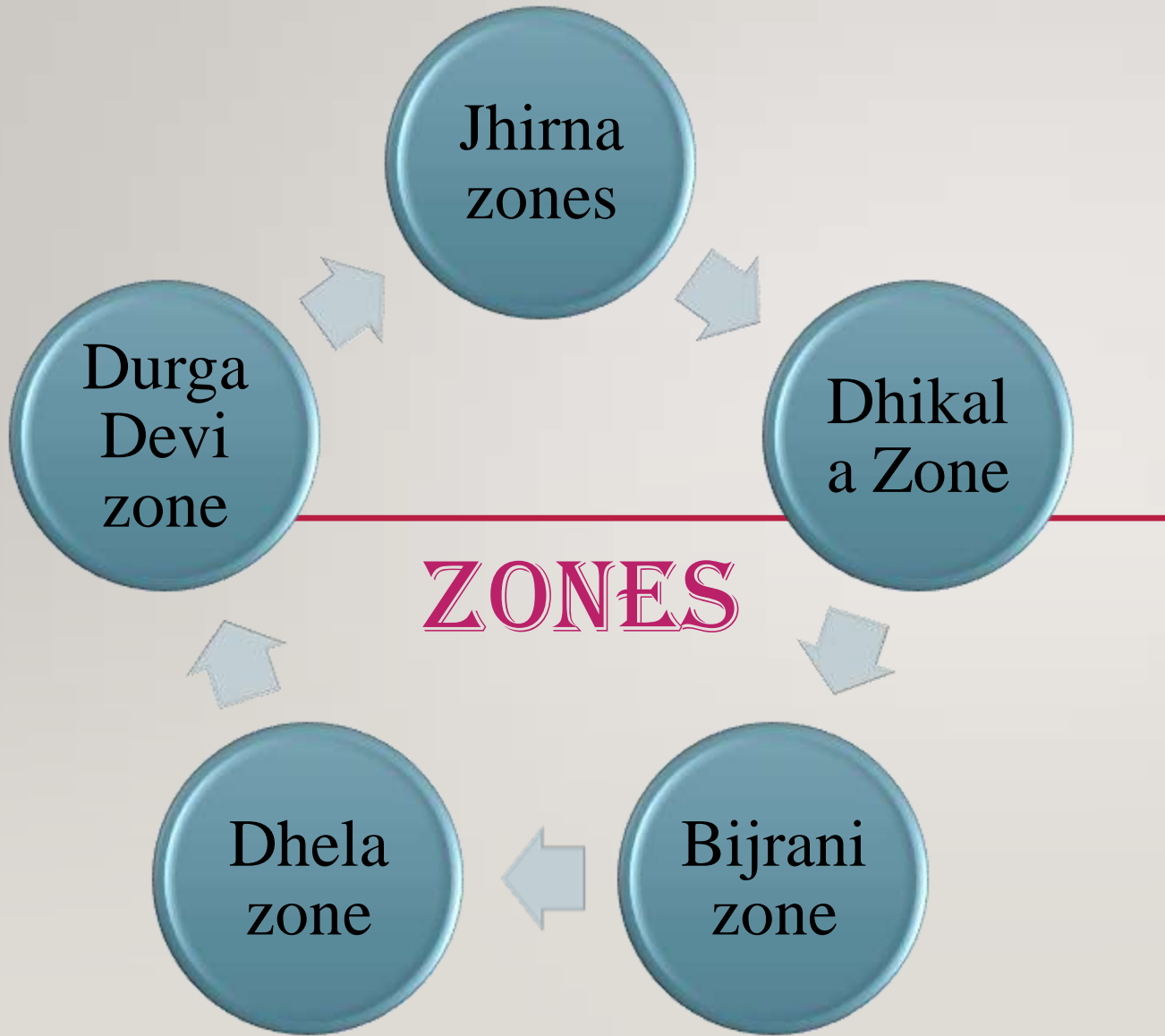


ECO-TOURISM IN CTR A BOON OR BANE

WORLD'S 2ND BEST ECOTOURISM.

MORE THAN 2 LAKH VISITS ANNUALLY.



VISIT TO
Jhirna and Dhikala

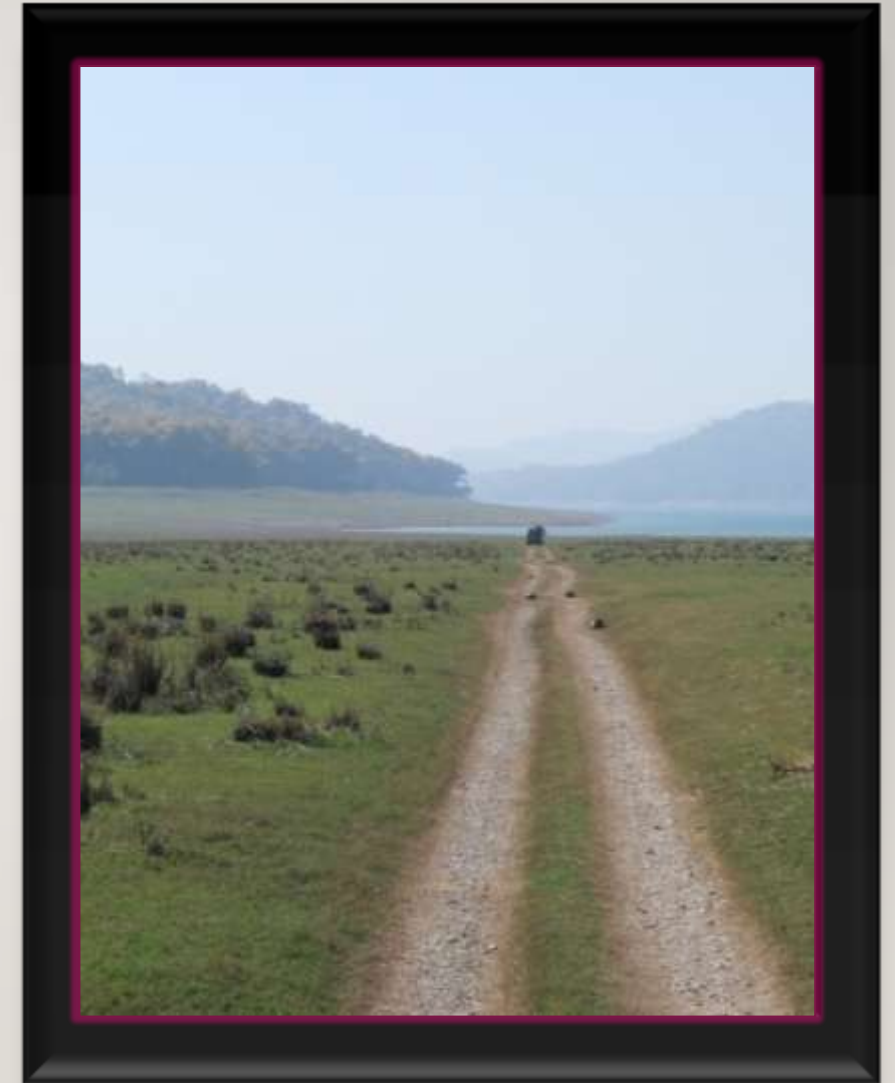


REGION

Dhikla Zone -
Core region

Others - Buffer
region

All over the year – Jhirna and
Dhela Zone
During Monsoon – others will be
closed.



PRINCIPLES OF ECOTOURISM

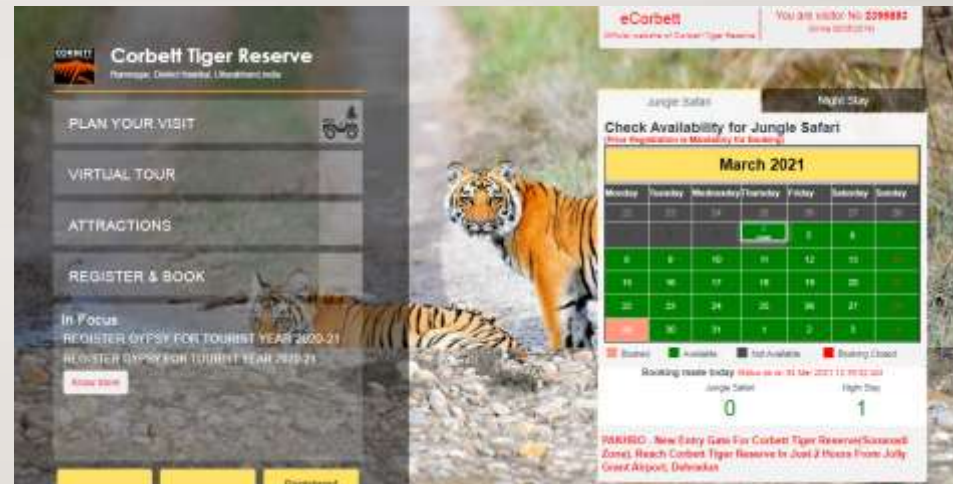
- Must not irreversibly damage the ecosystem
- Should be helpful for local livelihood
- Educative about conservation of nature (CTR does a good job here)

BENEFITS OF ECOTOURISM

- Provides livelihood for local community
- Awareness creation among local people , common public and future generation
- Funds wildlife conservation
- Fulfilling the Fundamental duty enshrined in the Constitution of India
- Industry without chimneys
- Create good image among foreign tourists and a foreign exchange earner

BEST PRACTICES

- Online services
 - Safari booking
 - Night Stay
 - Help desk
 - Virtual tour



BEST PRACTICES

- Improvements at CTR:
 - Quality infrastructure like accommodation, canteen, hospitality
 - Cleanliness - Waste disposal outside
 - Solar powered fencing around accommodations
 - Protect tourists
 - Energy friendly
- Interactive and engaging museum near Dhangarhi gate to increase awareness
 - Night at jungle
 - Animal sounds



BEST PRACTICES

- Regulation of traffic
 - Different ranges open during different times
 - Dhikala range: tourists allowed gypsy only when they do night stay
 - Private vehicles banned from entry
 - Limit on vehicles in each range
 - Limited licenses



BEST PRACTICES

- Behavioural change in tourists – monitoring by drivers
- Different penalties for drivers on different misconduct of tourists
 - Tourists disembarking
 - Not on time
 - Tourists feeding animals



BEST PRACTICES : CGVS

- Eco development Councils - in collaboration with Forest Department
 - Corbett Gram Vikas Samiti
 - Kaladhungi Corbett Museum
 - Souvenir Shop
 - Birdwatching trails
- Increase tourist footfall



BEST PRACTICES : CGVS

- Local recruitment of Staff and Training of
 - Guides, birdwatchers
 - Drivers
 - Hospitality staff
- Employment generation and local economic growth



CARRYING CAPACITY

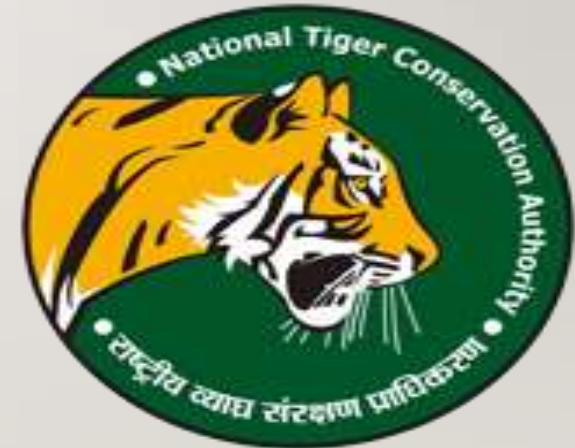
Physical Carrying Capacity (PCC): This is the “maximum number of visitors that can physically fit into a defined space, over a particular time”. It is expressed as:

$$PCC = A \times V/a \times Rf$$

Where, A = available area for public use

V/a = visitor / M

Rf = rotation factor (number of visits per day)



EXAMPLE: (FOR CORBETT TIGER RESERVE)

Assume Values :

Road length for tourism = **A = 100km**

Safe distance between 2 gypsies: 500m ; **V/a = 2/km**

Rotation time = park open time/ each visit duration;

Rf = 12hr/day ÷ 4hr = 3/day

PCC = 100 km * 2/km * 3/day = 600/day

REAL CARRYING CAPACITY (RCC):

RCC is the maximum permissible number of visits to a site, once the “reductive factors” (corrective) derived from the particular characteristics of the site have been applied to the PCC. These “reductive factors” (corrective) are based on biophysical, environmental, ecological, social and management variables.

$$RCC = PCC - C_{f1} - C_{f2} - \dots - C_{fn}$$

EXAMPLE

For example:

A particular species requires 1 month for breeding, out of the 7 months the park is open.

So, $Cf1 = 1/7 * PCC = 84$

If staff availability is 50% of sanctioned,

$Cf2 = 50/100 * (PCC - Cf1) = 258$

$RCC = 600 - 84 - 258 = 258$



TOURISM IN CTR :A BANE IN DISGUISE

Blocked wildlife corridors across the Kosi river. Now a rash of private properties inside the tiger reserve itself. **JAY MAZOOMDAAR** exposes a scandal that could ruin one of the country's most precious forests

THE RUSH FOR GREEN GOLD

Every bit of inhabitable land along the 17-km stretch of the Ramganga river from Dumunda to Marchula is up for sale. The mafia demands ₹20-80 lakh/acre and buyers include India's who's who

BURNT FORESTS, PRIVATE RIVERS

A 5-km road has been created inside the tiger reserve without any statutory clearance only to provide access to a private resort that is using a stretch of the Ramganga river as its private property

NEW HOMES WITH STOLEN STONES

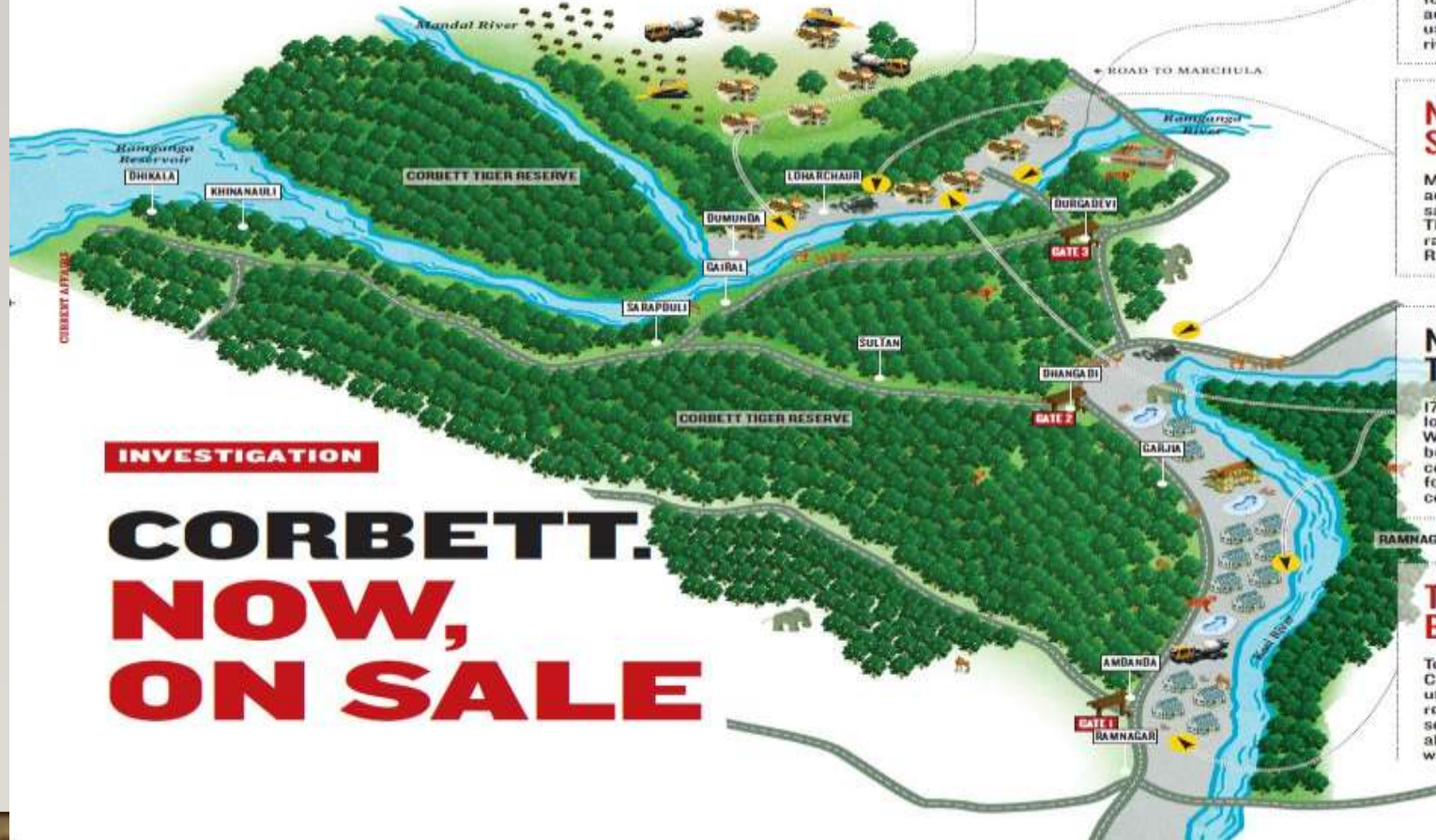
Mushrooming resorts mine the adjacent riverbed for stone and sand for construction activities. The Kosi river has been long ravaged. Now it is the turn of Ramganga river inside the reserve

NO GATE PASS FOR THIRSTY ANIMALS

17 km of the Ramganga river will no longer be available to animals. Walled resorts on Corbett's eastern boundary have cut off animals' access to the Kosi river and Ramnagar forests. Now fenced properties are coming up inside the reserve

THE PARK FOR BLACK MONEY

To potential buyers inside Corbett, the mafia is guaranteeing unregulated access to land through reserve forests, free natural resources, collusive forest staff and all-weather political backing. The whole offer runs on ready cash



INVESTIGATION

CORBETT. NOW, ON SALE

THE LAND RUSH

- Turmoil in tourism development
 - CTR has not only the highest density of tigers in the world.
 - Park for Black Money



BLOCKING THE KOSI CORRIDOR

- Kosi : connects Corbett to Ramnagar Forest Division.



CORBETT: THE LAND OF TOURISTS AND NOISE

- Too many tourists chasing too few tigers
- Incidences of baiting tigers
- Excessively loud music parties in resorts



FRADULENT ACTIVITES

- No of websites using Jim Corbett's name and duping tourists in multiple ways
- Difference in official prices and the price tourists are paying
- **Examples** : www.jimcorbettnationalpark.co.in, www.jimcorbettbooking.in, www.corbettnationalpark.com and www.corbettnationalpark.in
- Original Government site. : www.corbettonline.uk.gov.in
- Problem of Fake NGO's

Notices to 15 websites for fraudulently using Jim Corbett tiger reserve's name to dupe tourists

Authorities at Corbett tiger reserve have sent notices to 15 websites for fraudulently using its name to accept bookings from people for wildlife tourism and other facilities

Press Trust of India | June 20, 2019 22:19:37 IST

RECOMMENDATIONS

- Land use pattern must be defined around Tiger Reserves
- No industrial projects or resorts in the critical zone around tiger reserves,
- Examine legality of resorts and removal of encroachments.
- Focus more on quality of tourists rather than quantity

QUESTIONS TO PONDER

- Should ecotourism be phased out from the core area of a tiger reserve?
- Do corridors (most of which are revenue lands) need the same level of protection as buffer areas?
- Is high value tourism the way forward?

GROUP 4 MEMBERS

- Muthu S
- Pooja Nagle
- Pranav Jain
- Rajesh Kanna T
- Sujit J Patil
- Prabal Garg
- Siva Sakthi B