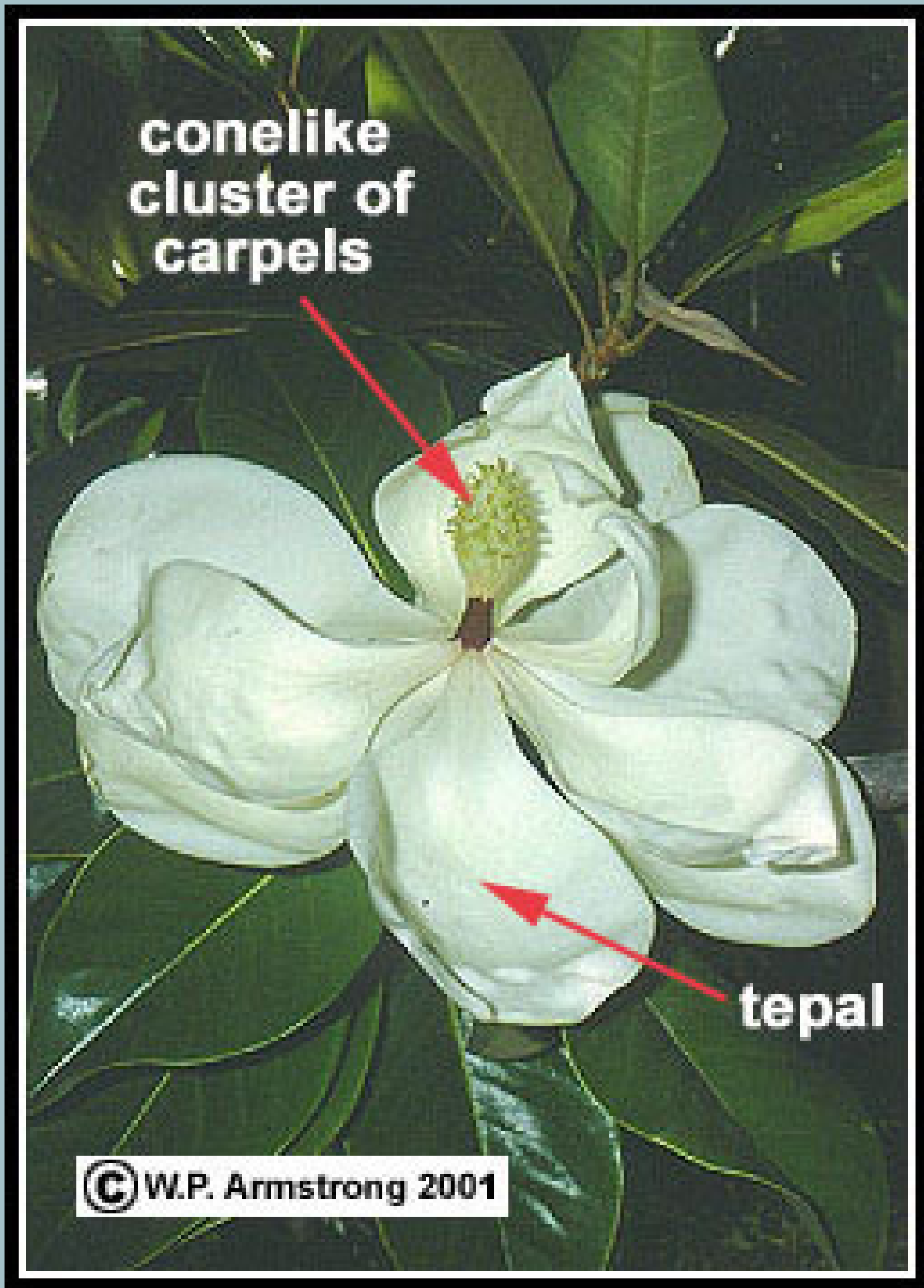


# Magnoliaceae Family



*Michelia champaca*





**Inflorescence :**

**Auxillary**

**Perianth :**

**Flower not**

**differentiated into**

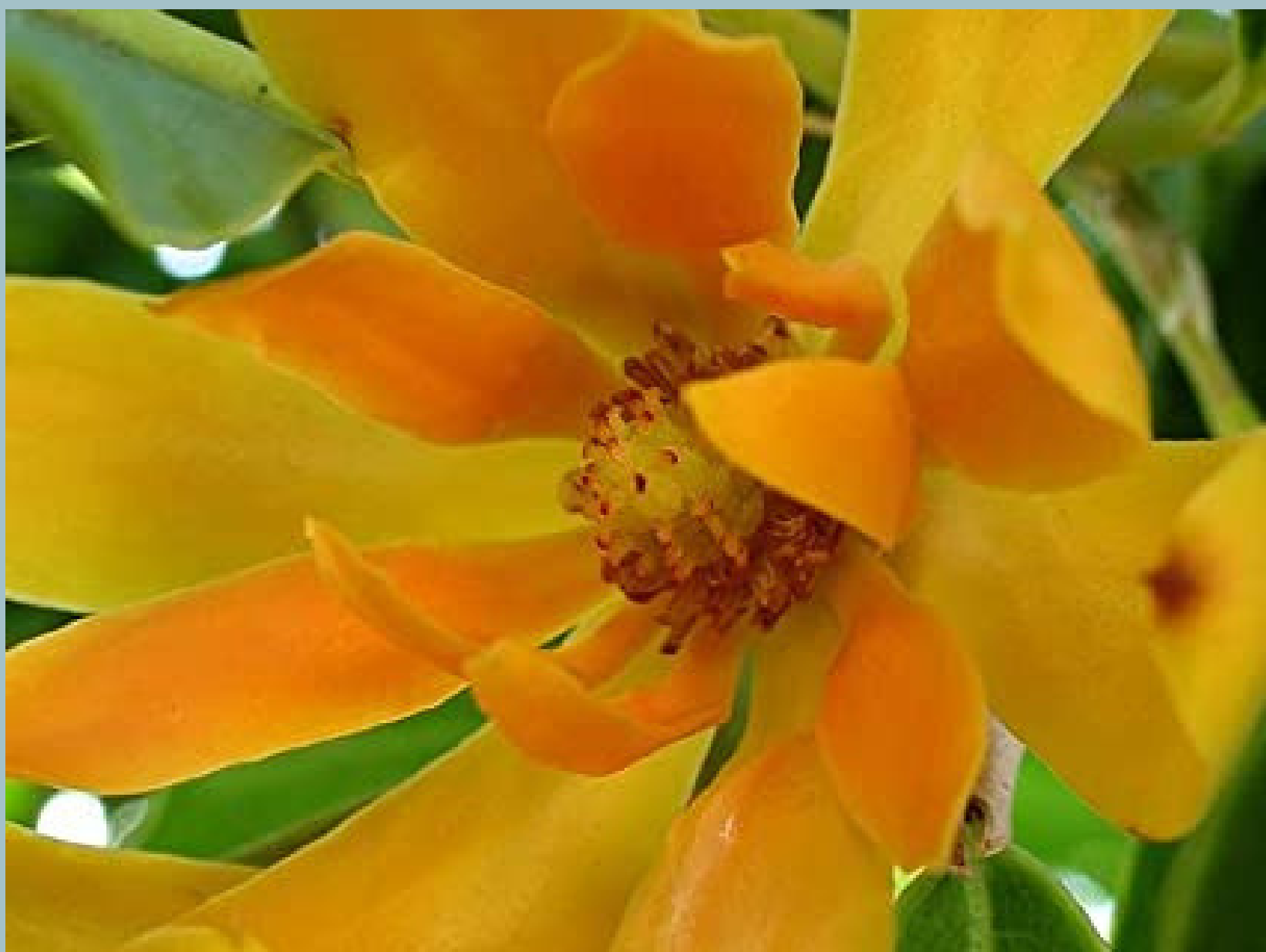
**Calyx and Corolla.**

**Also called TEPALS**

**TEPALS :**

**3 Tepals arranged**

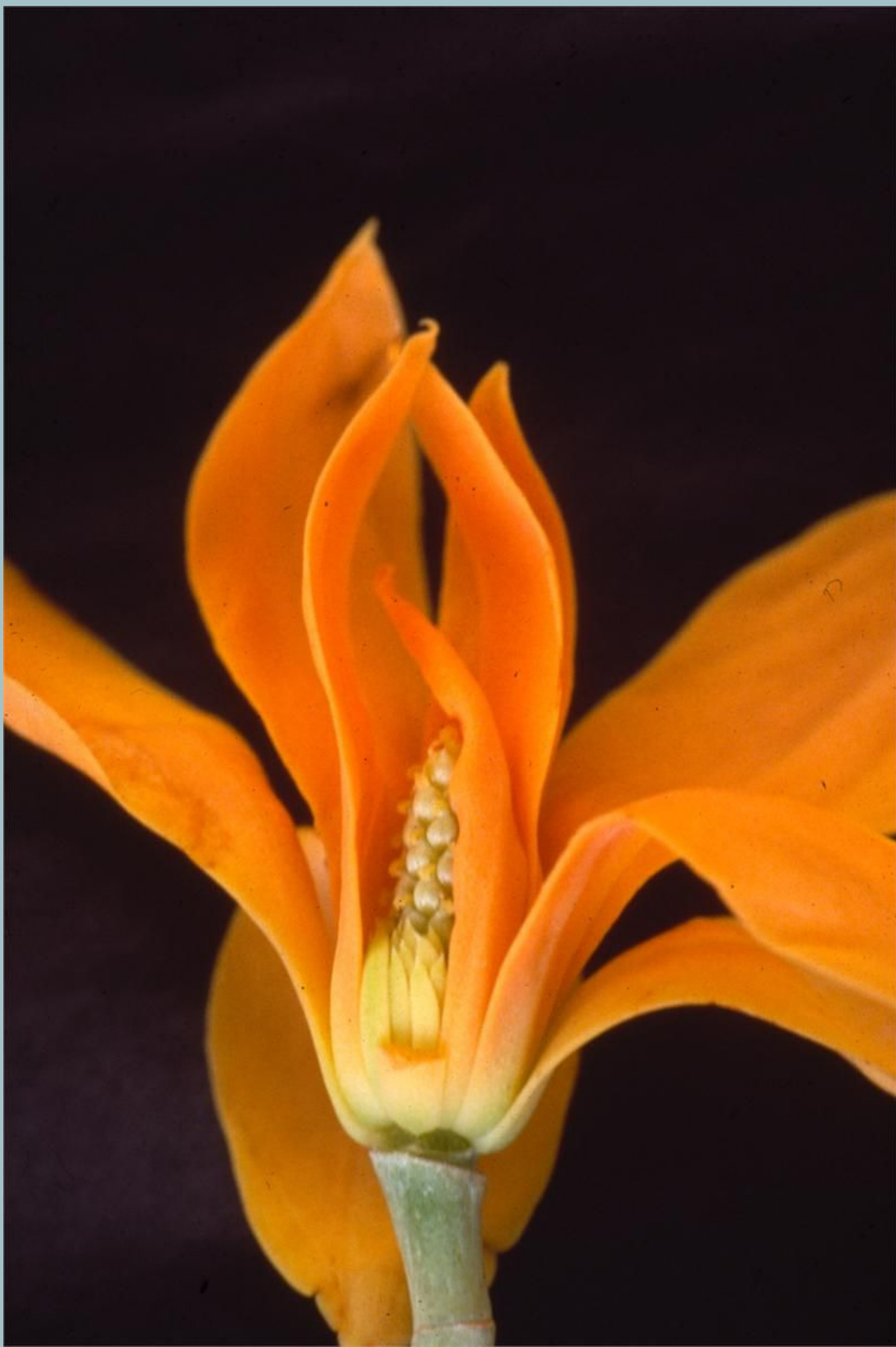
**in 3 whorls**



**Flower :**

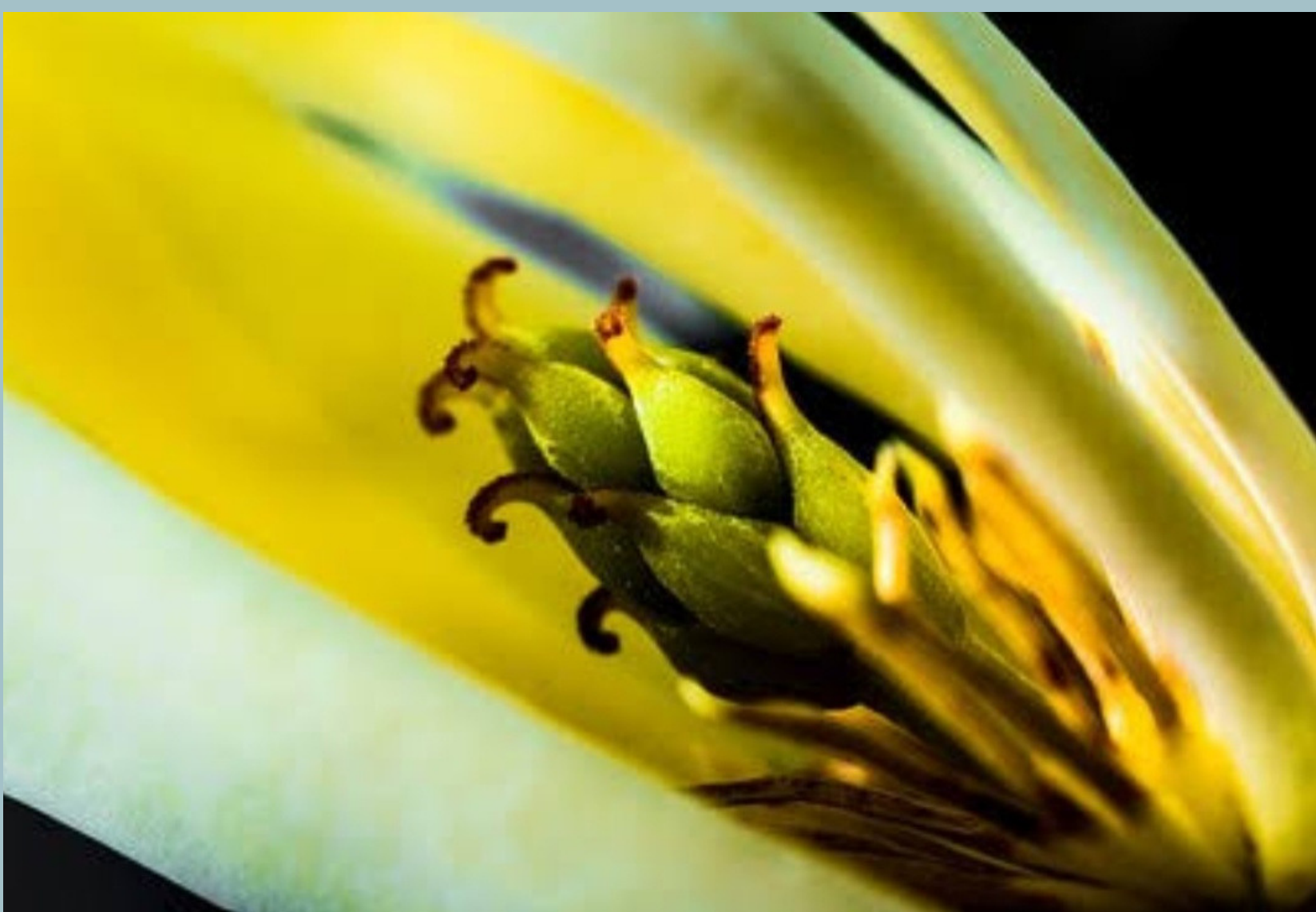
**Bisexual**

**Actinomorphic**



**Gynoecium :**  
**Female**  
**Reproductive**  
**Organ - Also**  
**called CARPEL**

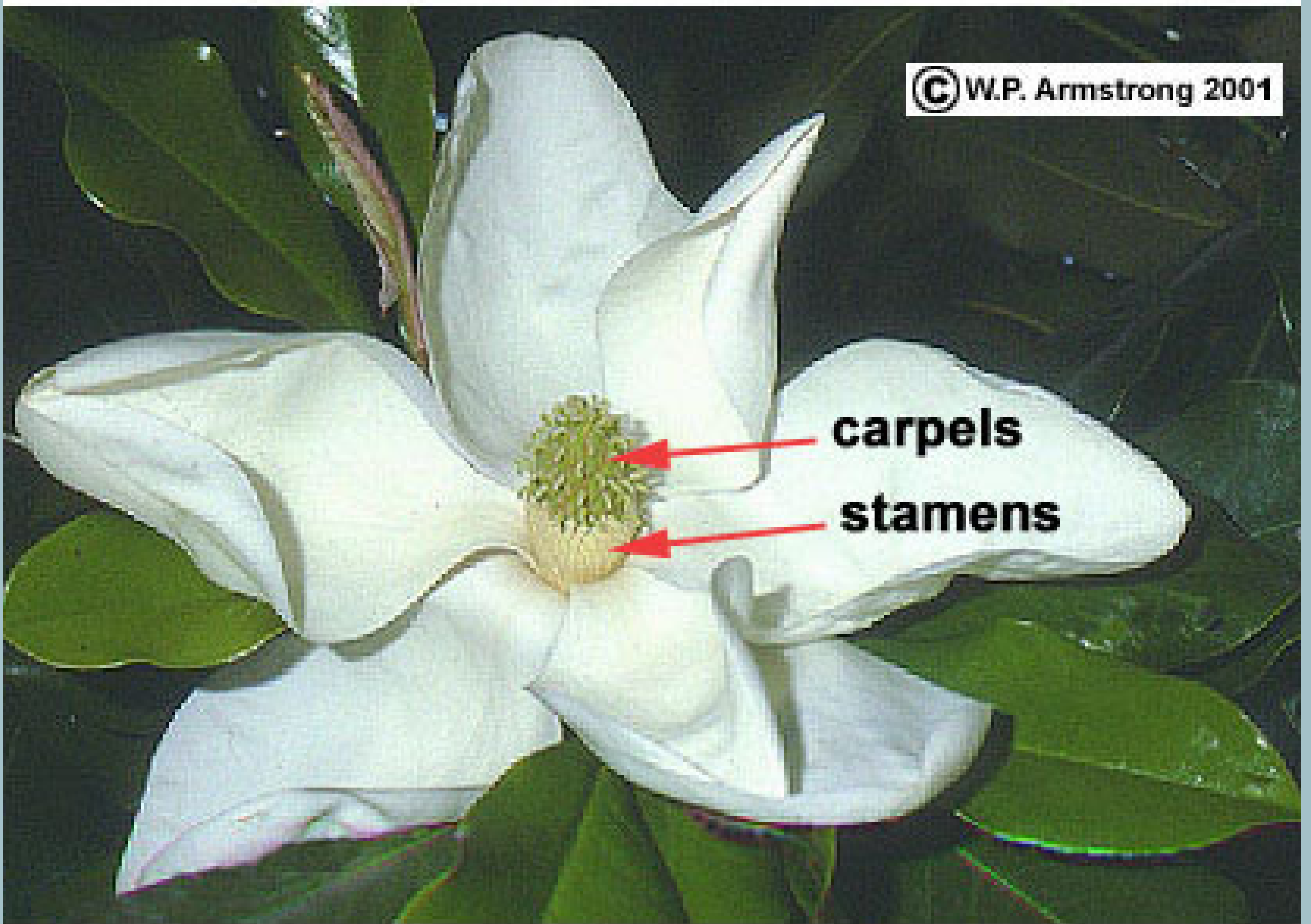
**CARPEL :**  
**Indefinite carpels**  
**are spirally**  
**arranged on an**  
**elongated floral**  
**axis called**  
**GYNOPHORE**



**Superior Ovary**



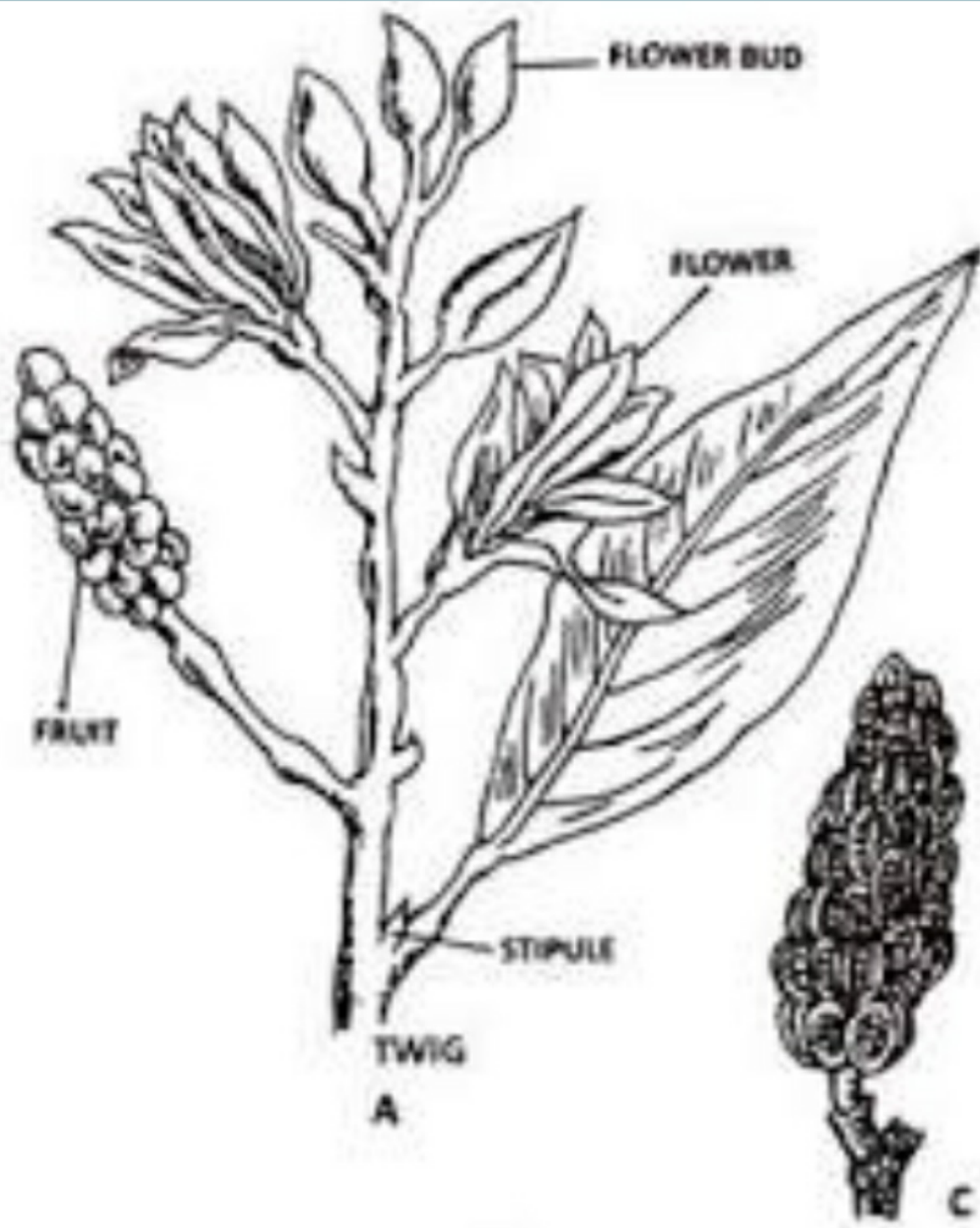
© W.P. Armstrong 2001



**Androecium -  
Male reproductive  
organ also known as  
STAMEN**

**STAMEN are indefinite  
and spirally arranged  
on lower part of  
GYNOPHORE**





- *Michelia champaca* (champa) - A twig, B - Floral diagram, C - Fruit

Br, ⊕, ♀, P<sub>3+3+3</sub>, A<sub>∞</sub>, G<sub>∞</sub>